

# Air Conditioning

## Product Information

### PQRY-P300YHM-A : WR2 Series 12hp Water Cooled Unit

R410A Heat Recovery



The WR2 system has double heat recovery potential, making this system very economical. Not only does it produce heat recovery from indoor units on the same refrigerant circuit, it also produces heat recovery via the water circuit between heat source units. Like the air source versions, the water cooled units benefit from a modular design approach. A twinning kit is required for double combinations.

## FEATURES



### OUTDOOR

Heating Capacity (kW) (nominal)	37.5
Cooling Capacity (kW) (nominal)	33.5
Heating Power Input (kW) (nominal)	8.15
Cooling Power Input (kW) (nominal)	7.44
COP / EER (nominal)	4.6 / 4.5
SCOP / SEER	5.11 / 5.73
Max No. of Connectable Indoor Units	30
Sound Pressure Level (dBA)	50
Sound Power Level (dBA)	64
Weight (kg)	181
Dimensions (mm) Width x Depth x Height	880 x 550 x 1160
Electrical Supply	380-415, 50HZ
Phase	3
Starting Current (A)	8
Running Current (A) - Heating	12.5
Running Current (A) - Cooling	11.5
Fuse Rating (BS88) - HRC (A)	20
Mains Cable No. Cores	4 + EARTH

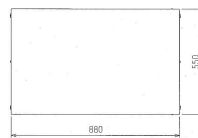
### PIPING RESTRICTIONS

Total Piping Length (m)	550
Furthest Piping Length (m)	165
Length Between OU and BC	110
Length Between Furthest IU and BC	40
Height Between OU and IU	50
Height Between IU and IU	15
Height Between IU and BC	15
Height Between BC (Main or Sub) and Sub BC	15

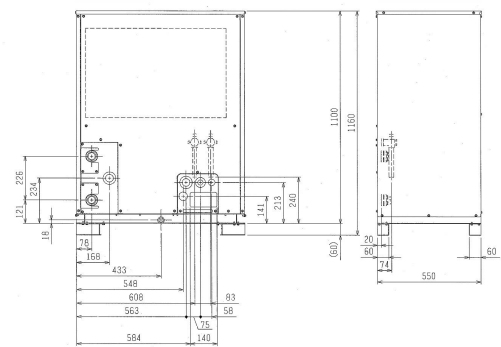
### DIMENSIONS

PQRY-P300YHM-A

Upper View >



Front View >



Right Side View >

